



**IMPACT
ENVIRONMENTAL
GROUP**

ESG ANNUAL REPORT 2023

Presented by: Chad Abrahamson



Committed to Fostering a More Sustainable World

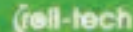


TABLE OF CONTENTS

LETTER FROM OUR CSO – 3

We are **IEG** – 4

Mission Statement – 5

IEG's Primary Focus – 6

IEG's Market Status – 7

IEG is an ESG-Centric Business – 8

IEG'S GOALS – 9

ENVIRONMENTAL GOALS OVERVIEW – 10

Recycled Materials used in IEG Products are Driving a Circular Economy – 11

Product Life-Cycle Extension – 12

Carbon Footprint Tracking – 13

IEG Company CO2 Creations vs. Offsets – 14

IEG Company CO2 Creations vs. Offsets Data – 15

Our New BLC Model Reduces Costs, Freight, and CO2 Emissions – 16

Initiatives for 2023 – 17

SOCIAL GOALS OVERVIEW – 18

IEG Safety Squad – 19

Primary Safety Program's 16 Core Elements – 20

2022 IEG Events – 21

GOVERNANCE GOALS OVERVIEW – 22

Strategic Initiatives to Support our ESG Efforts – 23

BUILDING SUSTAINABILITY – 24

Dear Stakeholders,

I am pleased to address you once again as the Chief Sustainability Officer for Impact Environmental Group (IEG), reflecting on our sustainability achievements throughout 2023.

In the past year, we have taken significant strides in advancing our ESG program, expanding its reach to encompass all Impact Environmental Group (IEG) facilities across the US and UK. This expansion signifies our steadfast commitment to embedding sustainability principles into every aspect of our operations.

Throughout 2023, we dedicated ourselves to expanding the collection of sustainability data throughout all our facilities. This concerted effort has enabled us to gather comprehensive insights into our environmental impact, empowering us to make informed decisions and drive continuous improvement across our operations.

Thank you for your continued support, and we eagerly anticipate sharing more updates on our sustainability initiatives in the near future.

Sincerely,

Chad Abrahamson



Chad Abrahamson

Chad Abrahamson

Chief Sustainability Officer, IEG

WE ARE IEG

We all strive to be part of something bigger than ourselves. We all believe that what we do each day personally or professionally contributes to the greater good. At Impact Environmental Group, we pride ourselves on playing an important role in the pursuit of a circular economy. IEG is a family of companies that provide products and services to the global waste and recycling industry. With locations positioned strategically around the US and Europe, each company in our portfolio plays a critical role in supporting the sustainability initiatives of our Customers. Our commitment to ESG goes beyond our offerings and is embedded in our operations around the globe as we continually look to reduce our own carbon footprint.



Leading provider of branded wear parts, equipment, accessories, and services for the solid waste and recycling industry.

MISSION STATEMENT

IEG'S PRIMARY FOCUS

Our primary focus is to provide wear parts and services for long-lived infrastructure across the waste and recycling value chain.

Our products and services include:



CONTAINER PARTS

Commercial Bins and Containers
Residential Carts
Roll-Off Containers
Roll-Off Lid Systems
Container Lids
Replacement Container Bottoms
Wheels and Casters
Container Parts and Accessories
Service and Repair



COLLECTION & COMPACTION SYSTEMS

Self-Contained Compactors
Bi-Sorters
Balers
Trash Chutes
Cylinders
Compactor Parts
Compactor Training
Service and Repair



WASTE TRANSPORTATION

Waste Rail Cars
Roll-Off Trucks
Long-Haul Waste Trailers
Vehicle Tarps
Tarp System Parts
Cargo Controls
General Equipment and Parts
Service and Repair



There is a
\$1.0+ billion
addressable
market.



Solid waste needs
to be collected
regardless of
economic conditions.



Harsh operating
environments drive
a continuous repair
and replacement cycle.



Demand is buoyed by
broader ESG and
secular market
dynamics.

IEG'S MARKET STATUS

We believe that there is a large and stable market with favorable secular trends and attractive recurring revenue characteristics.

Our research indicates that:

IEG IS AN ESG-CENTRIC BUSINESS

We are committed to fostering a more sustainable world. Driving a circular economy through extensive use of post-consumer and post-industrial materials.

How do we do that?



Facilitate More
Containerization



Support Growing Focus
on Organic Waste Diversion



Prolong Useful Lives
of Customer Assets



Contribute to Greater
Worker Safety



Secondary Support
for Clean Water



Support Industrial and
Consumer Recycling Initiatives



Drive Material
Conversion Trends



Community and
Charitable Engagement



Distribution Model Focused
on Reducing Carbon Footprint



ENVIRONMENTAL



SOCIAL



GOVERNANCE

**IEG'S
GOALS**

OVERVIEW

Minimize the impact of our own activities and supply chain, with a focus on carbon emissions reduction towards Net Zero

Encourage partners to join us on the path to Net Zero

Prioritize investment opportunities where we can add long-term value in a climate resilient manner

Produce products that complement and enhance the environment throughout their entire life

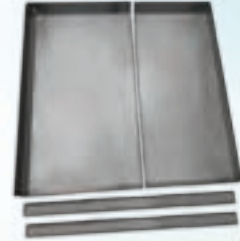
Develop our Best Landed Cost Distribution and Manufacturing Model to minimize our impact on the environment while maximizing our service levels to our stakeholders



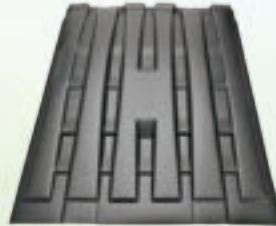
RECYCLED MATERIALS USED IN IEG PRODUCTS ARE DRIVING A CIRCULAR ECONOMY



13.6 million Lbs. of truck tires were saved from incineration.



7.7 million Lbs. of steel was salvaged from re-processing.



23.4 million Lbs. of HDPE plastic was re-purposed.



580,000 Lbs. of polypropylene was re-purposed.



ENVIRONMENTAL



PRODUCT LIFE-CYCLE EXTENSION



34.5 million Lbs. of steel was saved by extending the life of a dumpster by 3 times when the bottom is replaced or the can is refurbished.



Our aim is to replace all all-steel replacement bottoms with our Dura-Bottom Container Replacement System.



CARBON FOOTPRINT TRACKING

OUTPUTS: Employee Commutes, In-House Deliveries, Electricity, Natural Gas, Propane, Travel, LTL Trucking

OFFSETS: BLC Model Savings, Use of Recycled Materials, Product Life-Cycle Extensions

IEG - Current Estimated Net Carbon Footprint #Co2/Month											(4,396,4040)	%Co2 Offset -155%
Facility	Monthly Co2 Emission from Commute in Lbs	Monthly Co2 Emission from In House Deliveries	Monthly Co2 Emission from Electricity	Monthly Co2 Emission from NG in Lbs	Monthly Co2 Emission from Propane in Lbs	Monthly 2003 Travel Co2 Emissions	Monthly Co2 Emissions from Trucking/Ocean in Lbs	Monthly Co2 Emissions from Water Usage	Monthly Co2 Emissions from Waste vs. Recycling	Monthly Co2 from Virgin Material Use	Co2 Offsets Monthly	
Elgin, IL	61,810		365,582	171,032	1,467	1,062,756	135,025			-	(4,417,019)	
Clare, MI	13,202	36,248	260,967	-	2,454	-	117,603			77,197	(857,806)	
Hickory, NC	34,806		245,417	240	6,515	-	6,076		45,127	15,287	(2,111,737)	
Belvidere, NJ	17,403	16,455	81,472	-	6,380	-	16,455			-	-	
Jonesboro, AR	40,807		484,008	-	2,216	-	60,958			106,608	(839,775)	
Atlanta, GA	9,001		44,977	90,000	2,351	-	8,148			33,533	(45,835)	
Houston, TX+	30,005	37,897	23,856	58	3,291	11	20,353			9,737	(42,216)	
Chesterfield, UK, CCE	25,204	1,046	20,824	23,487	-	-		121	1,848	155,385	(27,421)	
Winsford, UK, UKCM	43,207	80,656	46,143	-	-	-	-		30,267	102,572	(1,499,857)	
Worcestershire, UK, EHT	30,005	32,398	13,334	1,268	-	-	5,671	96	6,019	6,952	(163,640)	
											4,431,292	(10,005,305)



ENVIRONMENTAL

IEG COMPANY CO2 CREATIONS VS. OFFSETS



IEG COMPANY CO2 CREATIONS VS. OFFSETS DATA

Category	Sum of Annual Usages in Lbs.	Sum of CO2 Emissions Avoided
Reclaimed HRS Steel	9,812,853	(9,076,889)
Recycled PE	25,548,146	(18,558,173)
Recycled PP	629,551	(2,175,728)
Truck Tires Diverted	7,851,638	(23,800,278)
Btms Offset (#Btms Made/Btms Repair)	96,640	(63,315,863)
BLC Model Freight Savings		(3,136,731)
Category	43,938,828	120,063,663 Lbs.



2023 CO₂ Offset Metrics.

IEG's CO₂ emissions avoidance in 2023 was the equivalent to removing **11,588** cars from the road for one year.



ENVIRONMENTAL

OUR NEW BLC MODEL REDUCES COSTS, FREIGHT, AND CO2 EMISSIONS



INITIATIVES FOR 2024

Dial in tracking water consumption by facility to determine where to focus our efforts on reduction

Begin tracking waste vs recycling rates by facility to determine where to focus our efforts on improvement

Consolidate operating facilities to reduce overall footprint and increase efficiencies.

Expand Best Landed Cost Model to include Houston and expand the NJ footprint.



OVERVIEW

Support the physical, mental health and wellbeing of our staff and supply chain

Create a culture of giving back to our local communities

Cultivate a diverse team with a focus on creating a culture of openness and inclusivity

Encourage continual professional learning and development across all aspects of the business

Prioritize and produce products and services that enhance the health and wellbeing of the communities in which they are used to leave a lasting positive legacy throughout their whole life-cycle



IEG SAFETY SQUAD

Developed in 2022 and launched January of 2023

Site Safety Team requirements:

- All sites will follow the same 16 Core Elements of our Primary Safety Program
- All sites will utilize the new IEG Red Books
- All employees will go through the Paylocity LMS Training
 - All employees will learn the 15 OSHA Required Training Topics
 - This program consists of 16 hours of training that covers safety, social responsibility, and ethics
- Site Emergency Evacuation Plans and Engineering Assistance
- House Keeping
- IEG Safety Levels



SOCIAL



PRIMARY SAFETY PROGRAM'S 16 CORE ELEMENTS

1. **IEG Safety Committee Charter**
2. **Quarterly IEG Safety Committee Meeting**
3. **Core Elements of Your Safety Program**
4. **IEG Red Books – Complete with overview, what to do, accident investigation, phone lists and contacts**
5. **Site Specific PPE Plans**
6. **Site New Employee Orientation Program**
7. **Blood-borne Pathogen Program**
8. **Paylocity & Risk Securities OSHA Required Training Program**
9. **Annual 3rd Party Audit**
10. **Site Fall Safety Program**
11. **Site Hazard Communication Program**
12. **Site Emergency Evacuation Plan**
13. **Site LOTO Program**
14. **Site Lift Truck Certification Program**
15. **Site Safety Guarding Plan**
16. **Site MVR Program**



2023 IEG EVENTS

Garbage Man's Invitational - EREF

<https://garbagemansinvitational.com/gmi-charity/>

EREF Annual Fundraiser

<https://e.givesmart.com/events/vE5/>

CASA Christmas Fundraiser

<https://casakanecounty.org/casa-events/countryside-clays/>

CASA Skeet Fundraiser

<https://casakanecounty.org/casa-events/holiday-giving-program/>

10 Build-A-Bike Sponsorships for Waste Connections

<https://careers.wasteconnections.com/us/en/waste-connections-cares>

Lee County Storm Restoration Fundraiser

<https://www.klcb.org/>

Waste Connections Golf for Kids

Local Christmas Promise Events hosted by our customers



SOCIAL



OVERVIEW

To continue to run the business in a participatory, consensus-oriented, accountable, transparent, responsive, efficient, equitable and inclusive way

To communicate our policies and strategy clearly to our various manufacturing facilities and throughout our global supply chain

To make appropriate levels of monitoring and disclosure to display our approach to all stakeholders

GOVERNANCE

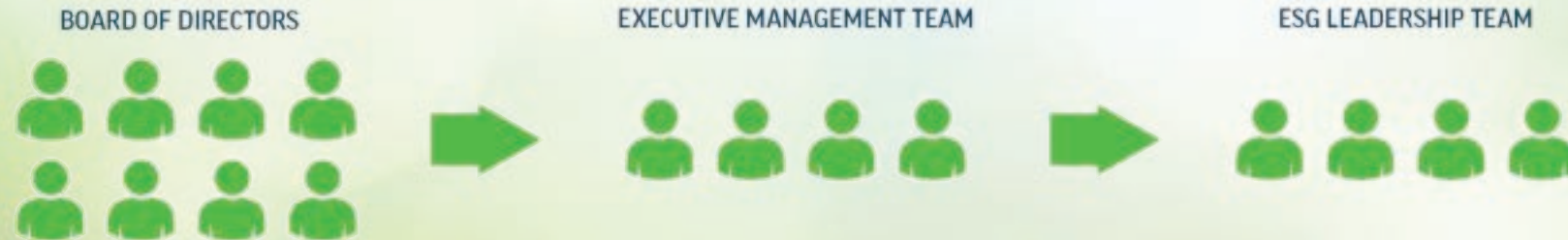


STRATEGIC INITIATIVES TO SUPPORT OUR ESG EFFORTS

IEG is setting strategic initiatives to support our ESG efforts by engaging employees at all levels of the company including the board of directors, chief operating officer, as well as all employees. Our ESG initiatives and governance are led by Chief Sustainability Officer – Chad Abrahamson, while our cross-functional management team will manage the daily activities, policies and procedures supporting the ESG program initiatives.

The ESG team will consist of representation from finance, HR, operations, distribution, procurement as well as engineering. Together the cross-functional management team will:

- Collaborates and communicates with all stakeholders
- Evaluates potential ESG efforts that are presented to management
- Track internal ESG data by facility
- Interact with stakeholders to communicate ESG objectives, accomplishments and set goals for the organization



BUILDING SUSTAINABILITY

OUR AIMS:

We wish to reduce our environmental impact, and to contribute towards social responsibility, particularly in the areas of our social, economic and environmental choices.

We take this position:

- as a corporation,
- as an employer of staff whose actions can make a positive contribution in this regard,
- as a manufacturer of goods and services,
- as a global procurer of goods,
- and as an industry leader in the global environmental goods market

In this document, the term 'social responsibility' covers all areas of corporate social responsibility, including (but not limited to) environmental, technical, economic and social issues.

iegna.com/esg-commitment



IMPACT ENVIRONMENTAL GROUP

Committed to Fostering a More Sustainable World

For more information or to order, contact us:

 [ImpactInnovates.com](https://www.impactinnovates.com)  info@IEGna.com  **877.454.3748**

CONTAINER PARTS | COMPACTOR PARTS & SERVICE
ROLL-OFF PARTS | TRUCK TARPS | RESIDENTIAL CART PARTS





**IMPACT
ENVIRONMENTAL
GROUP**



DuraFlex

Durocks



roll-tech



Taylor



Committed to Fostering a More Sustainable World